

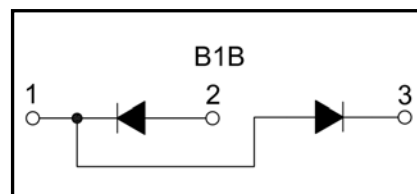
PRODUCT FEATURES

- Ultrafast Reverse Recovery Time
- Soft Reverse Recovery Characteristics
- Low Reverse Recovery Loss
- Low Forward Voltage
- High Surge Current Capability
- Low Inductance Package



APPLICATIONS

- Inversion Welder
- Uninterruptible Power Supply (UPS)
- Plating Power Supply
- Ultrasonic Cleaner and Welder
- Converter & Chopper
- Power Factor Correction (PFC) Circuit



ABSOLUTE MAXIMUM RATINGS

$T_C=25^{\circ}\text{C}$ unless otherwise specified

| Symbol | Parameter | Test Conditions | Values | Unit |
|-----------------|--------------------------------------|---|-------------|-----------------------------|
| V_R | Maximum D.C. Reverse Voltage | | 1700 | V |
| V_{RRM} | Maximum Repetitive Reverse Voltage | | 1700 | V |
| $I_{F(AV)}$ | Average Forward Current | $T_C=80^{\circ}\text{C}$, Per Diode | 300 | A |
| | | $T_C=80^{\circ}\text{C}$, 20KHz, Per Diode | 200 | A |
| $I_{F(RMS)}$ | RMS Forward Current | $T_C=80^{\circ}\text{C}$, Per Diode | 420 | A |
| I_{FSM} | Non-Repetitive Surge Forward Current | $t=10\text{ms}$, 50Hz, Sine | 3000 | A |
| | | $t=8.3\text{ms}$, 60Hz, Sine | 3300 | A |
| I^2t | I^2t (For Fusing) | $t=10\text{ms}$, 50Hz, Sine | 45000 | A^2s |
| | | $t=8.3\text{ms}$, 60Hz, Sine | 54450 | A^2s |
| P_D | Power Dissipation | | 893 | W |
| T_J | Junction Temperature | | -40 to +150 | $^{\circ}\text{C}$ |
| T_{STG} | Storage Temperature Range | | -40 to +125 | $^{\circ}\text{C}$ |
| V_{isol} | Insulation Test Voltage | AC, $t=1\text{min}$ | 4000 | V |
| Torque | to-Sink | Recommended (M6) | 3~5 | N·m |
| Torque | to-Terminal | Recommended (M6) | 3~5 | N·m |
| $R_{\theta JC}$ | Thermal Resistance | Junction-to-Case | 0.14 | $^{\circ}\text{C}/\text{W}$ |
| Weight | | | 300 | g |

ELECTRICAL CHARACTERISTICS

T_C=25°C unless otherwise specified

| Symbol | Parameter | Test Conditions | Min. | Typ. | Max. | Unit |
|------------------|-------------------------------|---|---|------|------|------|
| I _{RM} | Reverse Leakage Current | V _R =1700V | -- | -- | 5 | mA |
| | | V _R =1700V, T _J =125°C | -- | -- | 20 | mA |
| V _F | Forward Voltage | I _F =300A | -- | 2.0 | 2.5 | V |
| | | I _F =300A, T _J =125°C | -- | 2.25 | -- | V |
| t _{rr} | Reverse Recovery Time | I _F =1A, V _R =30V, di _F /dt=-200A/μs | -- | 120 | -- | ns |
| t _{rr} | Reverse Recovery Time | V _R =850V, I _F =300A | -- | 500 | -- | ns |
| I _{RRM} | Max. Reverse Recovery Current | | di _F /dt=-200A/μs, T _J =25°C | -- | 30 | -- |
| t _{rr} | Reverse Recovery Time | V _R =850V, I _F =300A | -- | 1.6 | -- | μs |
| I _{RRM} | Max. Reverse Recovery Current | | di _F /dt=-200A/μs, T _J =125°C | -- | 45 | -- |

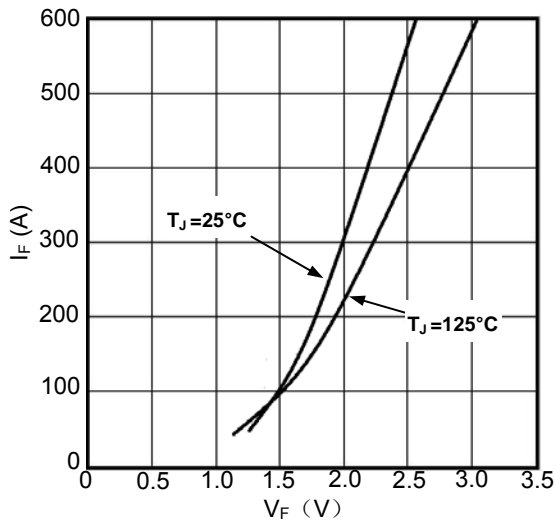


Figure1. Forward Voltage Drop vs Forward Current

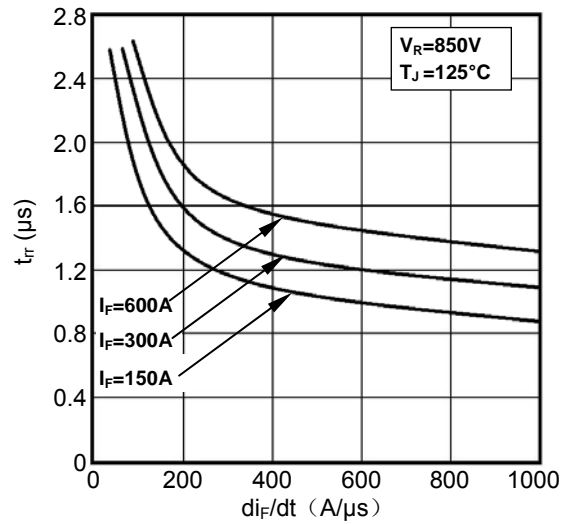


Figure2. Reverse Recovery Time vs di_F/dt

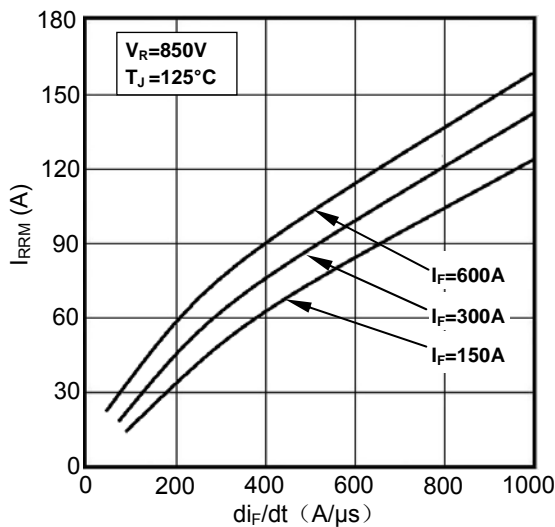


Figure3. Reverse Recovery Current vs di_F/dt

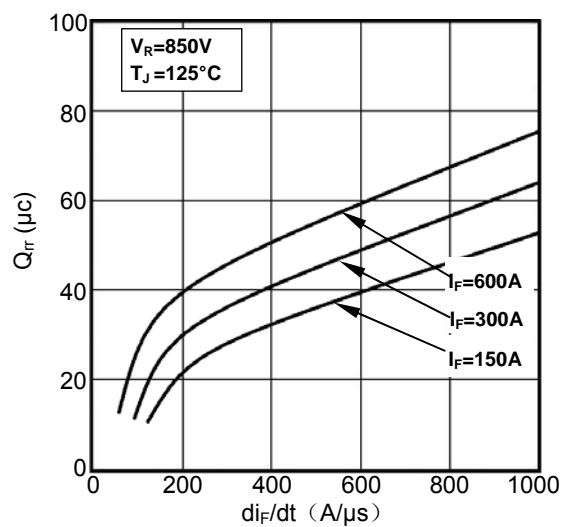


Figure4. Reverse Recovery Charge vs di_F/dt

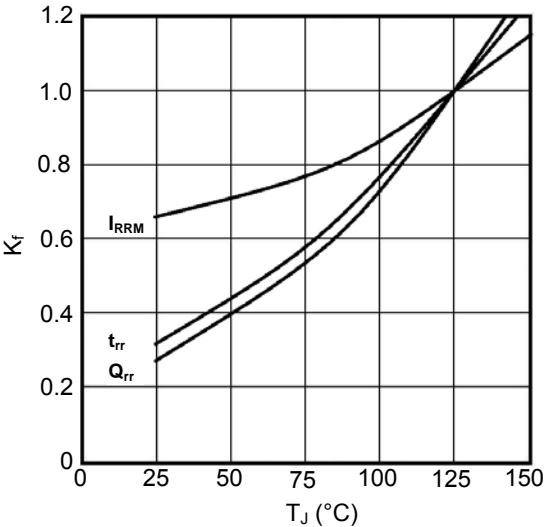


Figure5. Dynamic Parameters vs Junction Temperature

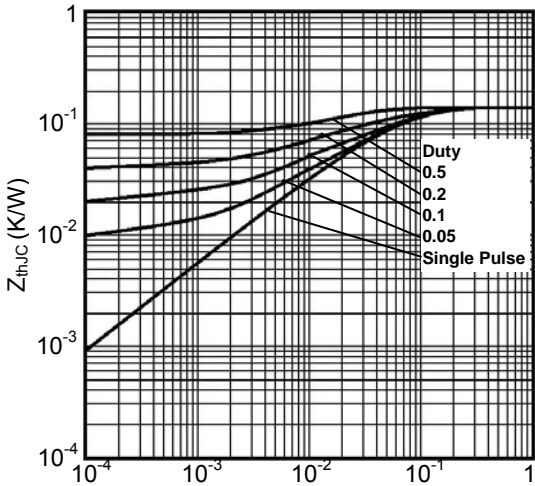
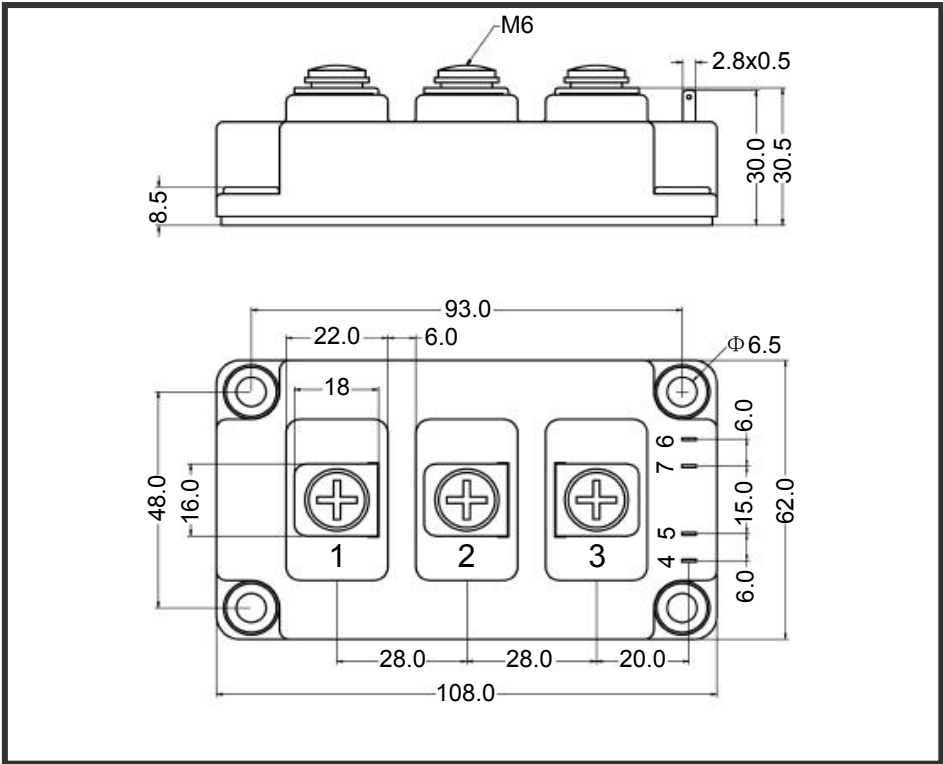


Figure6. Transient Thermal Impedance



Dimensions (mm)
Figure7. Package Outline